

DEP 206
A:62.57m²

DEP.206 SEGUNDO NIVEL

INTERIOR P.B.= 62.57M²

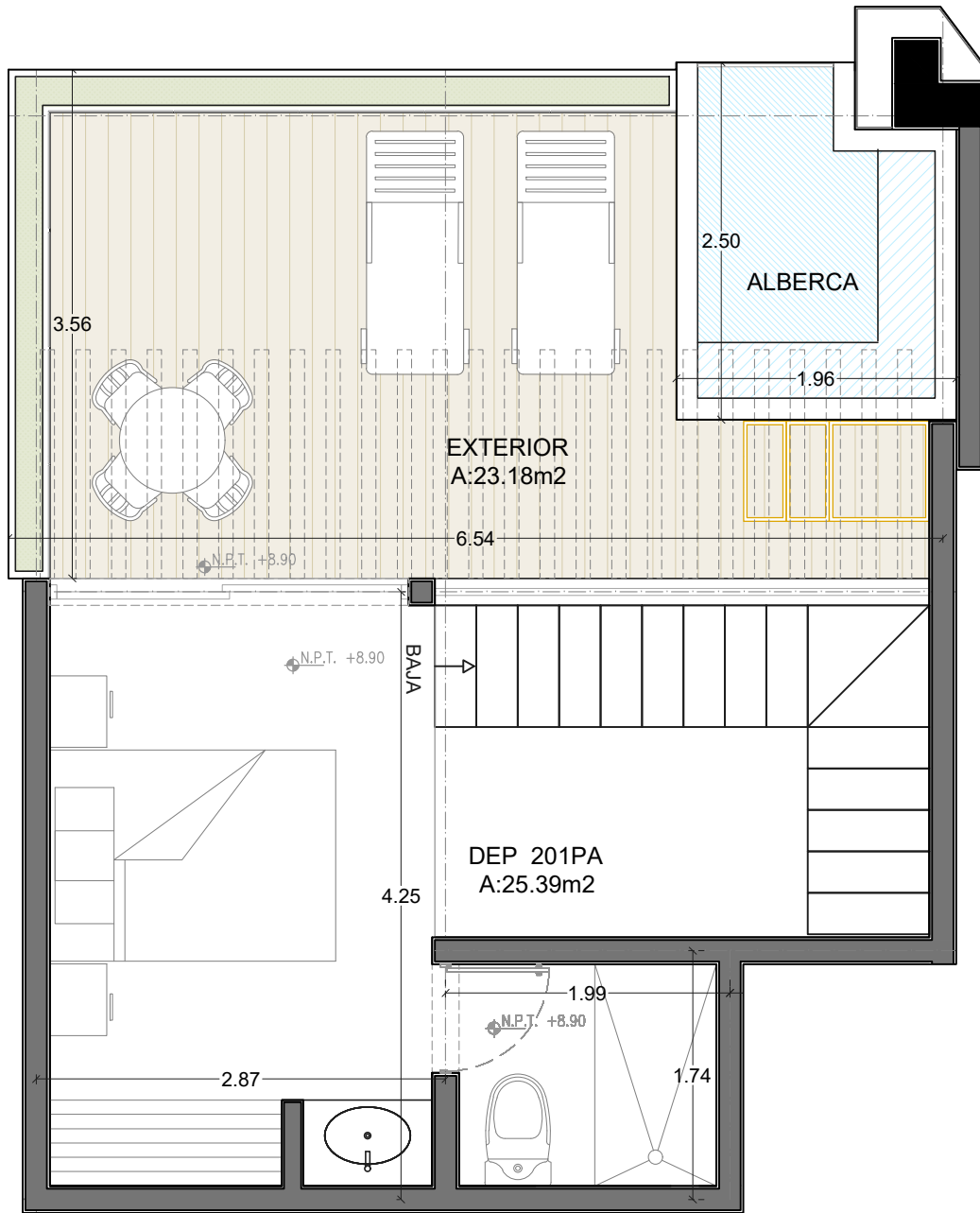
INTERIOR P.A.= 25.39M²

EXTERIOR= 23.18M²

TOTAL=111.14M²



NORTE



DEP.206 ROOF TOP

INTERIOR P.B.= 62.57M²

INTERIOR P.A.= 25.39M²

EXTERIOR= 23.18M²

TOTAL=111.14M²



NORTE